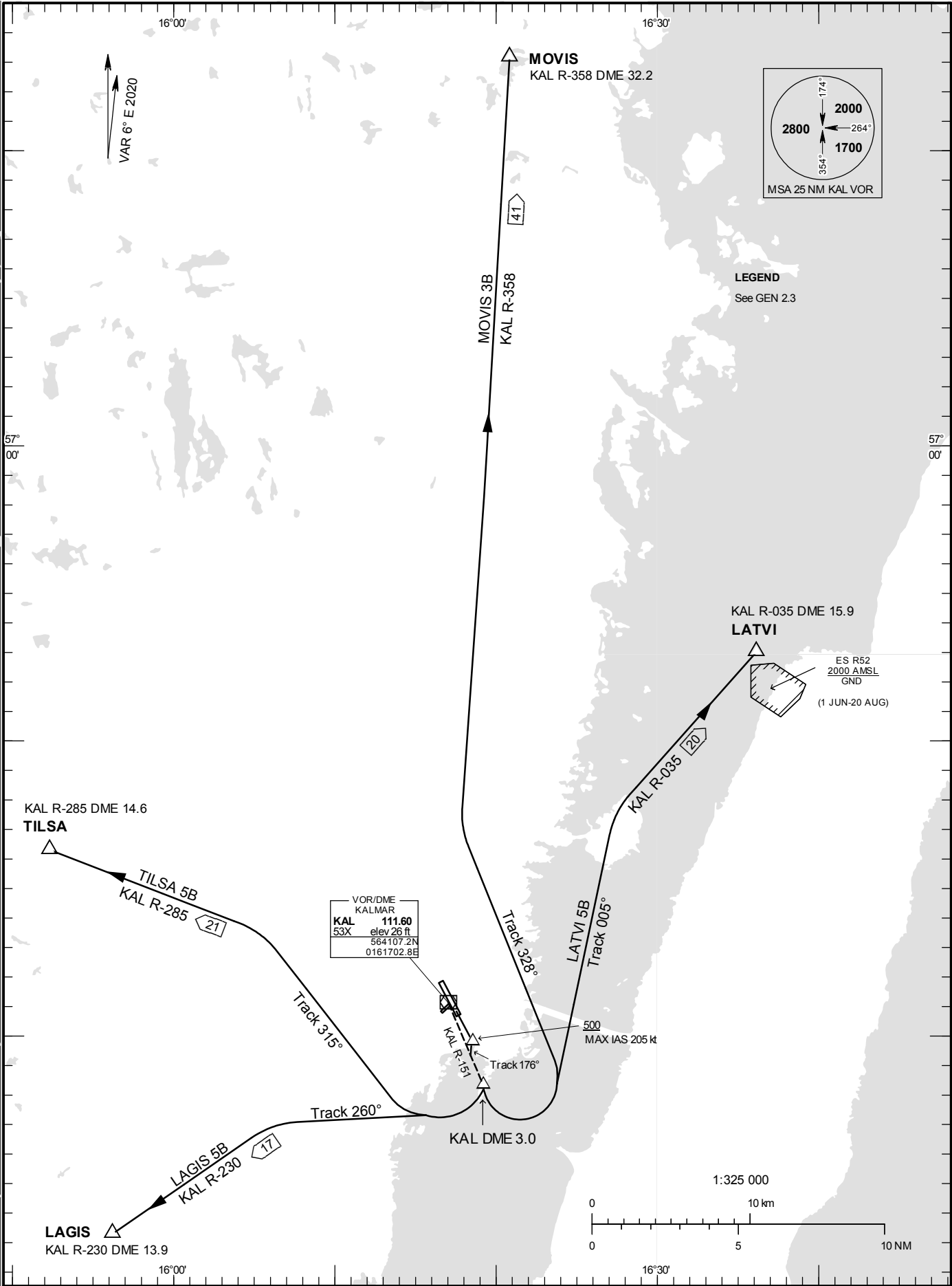


**STANDARD INSTRUMENT  
DEPARTURE CHART (SID) -  
ICAO**

HGT and ALT in ft  
BRG are MAG  
TA 5000 ft AMSL

KALMAR TOWER 130.805



CHANGE: Editorial

**KALMAR**

**DEPARTURE (SID) RWY 16**

**LAGIS FIVE BRAVO DEPARTURE (LAGIS 5B)**

Straight ahead to 500 ft or above, MNM climb gradient 400 ft/NM (6.6%), turn right (MAX IAS 205 kt) to track 176° to intercept KAL R-151 and continue to KAL DME 3. Turn right to track 260° to intercept KAL R-230 and proceed to LAGIS.

**LATVI FIVE BRAVO DEPARTURE (LATVI 5B)**

Straight ahead to 500 ft or above, MNM climb gradient 400 ft/NM (6.6%), turn right (MAX IAS 205 kt) to track 176° to intercept KAL R-151 and continue to KAL DME 3. Turn left to track 005° to intercept KAL R-035 and proceed to LATVI.

**MOVIS THREE BRAVO DEPARTURE (MOVIS 3B)**

Straight ahead to 500 ft or above, MNM climb gradient 400 ft/NM (6.6%), turn right (MAX IAS 205 kt) to track 176° to intercept KAL R-151 and continue to KAL DME 3. Turn left to track 328° to intercept KAL R-358 and proceed to MOVIS.

**TILSA FIVE BRAVO DEPARTURE (TILSA 5B)**

Straight ahead to 500 ft or above, MNM climb gradient 400 ft/NM (6.6%), turn right (MAX IAS 205 kt) to track 176° to intercept KAL R-151 and continue to KAL DME 3. Turn right to track 315° to intercept KAL R-285 and proceed to TILSA.